



**WEST MULTNOMAH**  
SOIL & WATER CONSERVATION DISTRICT



# **ANNUAL REPORT**

**WEST MULTNOMAH  
SOIL & WATER  
CONSERVATION DISTRICT**

**Fiscal Year 2010-2011**

## **Chair's Report** *Jane Hartline, Board Chair*

How will West Multnomah County be different if our district staff, board and volunteers do their work well?

- More urban and rural landowners will know about invasive weeds and will be diligent about controlling them on their properties.
- Our district's horses, cows, goats and llamas will enjoy lush pastures and their waste won't pollute our streams and rivers.
- Our streams, rivers and watersheds will be healthier and support the return of endangered salmon species.
- The birds and bees will thrive with ample food and shelter and will co-exist with people on farms and in suburban backyards.
- Rare habitats, such as oak savannahs, ash swales and sedge meadows, will be appreciated and restored.
- Forests and small woodlots on private land will be stewarded thoughtfully and knowledgeably.
- Residents of our district will enthusiastically tackle conservation projects like rain gardens, bioswales and hedgerows.
- We'll enjoy more locally-grown food, farmed with methods that contribute to the long-term health of the land.

An ambitious agenda? Not really. It's just what we work on every day, with the cooperation of many of you. Bravo to all of you who are already partnering with us in these pursuits. We extend a hearty invitation to the rest of you! Come on board!

### ***In This Issue***

Invasive Weeds	4
FISH Grants	5
Urban Programs	6
Farms & Livestock	7
Forestry	8
Rural Programs	9
Sauvie Island	10
Outreach & Communications	11
About the District	12
Directors & Staff	12

---

## **District Manager's Report** *Dick Springer, District Manager*

Five years and five budgets - voter confidence pays off! Scores of conservation projects are scattered across the hills, watersheds and river plains of West Multnomah Soil & Water Conservation District. Thanks to cooperating land-owners, skilled technical assistance and financial incentives.

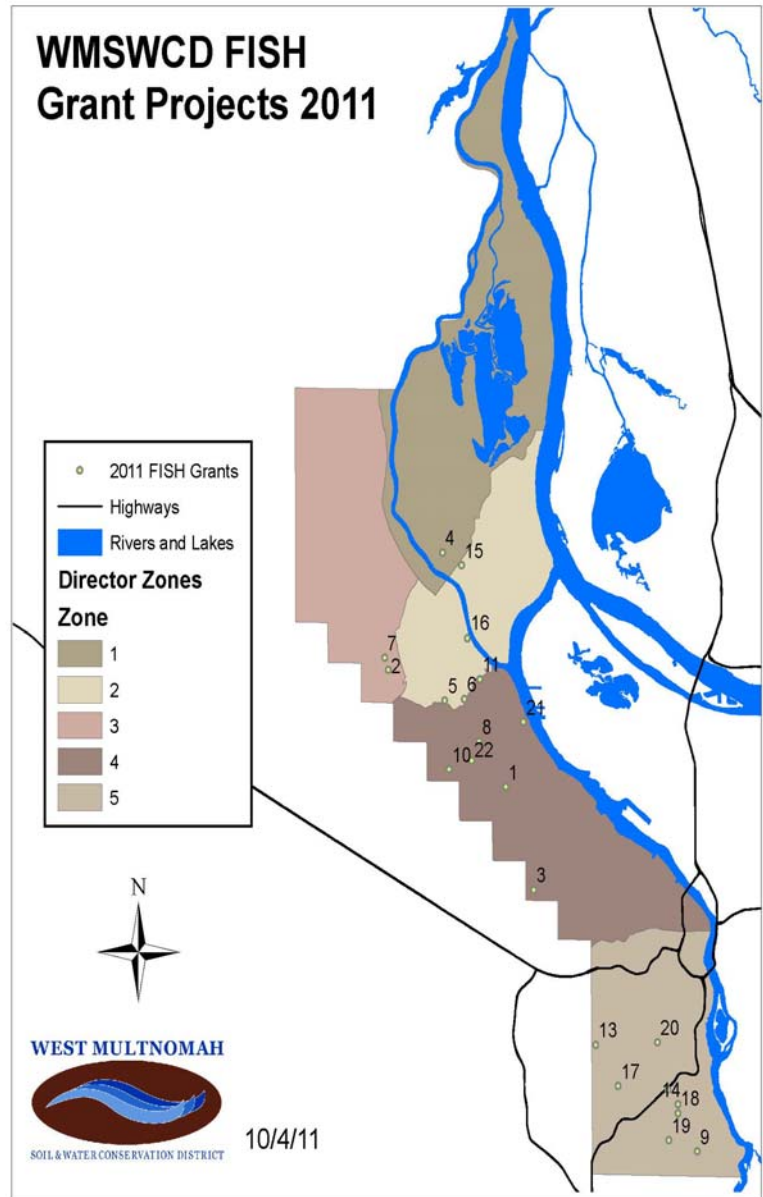
Locally-led conservation is still the key to success. In recent decades, the value of our region's natural resources continues to increase. From fertile farmland and forests to abundant fresh-water lakes and rivers, there will be more demands for clean air and water as well as locally-produced foods.

We are well-positioned at Oregon's rural and urban interface. Protecting clean water, restoring native plant & animal species while expanding opportunities for small acreage farms -- are all on the list of District priorities. Partnerships with local & state agencies, community and stewardship groups are essential to coordinate limited resources with volunteer training and targeted habitats.

Growing awareness of neighborhood gardens & backyard conservation practices can welcome birds and pollinators. We are always looking for new opportunities to work with land owners.

## 2010-2011 Projects

1. Tualatin Mountain Wetland: \$10,000.
2. Brady Blackberry Removal & Planting: \$1,320.
3. Forest Heights Stream Enhancement: \$965.
4. Healy Weed Control and Afforestation: \$1,945.
5. Mucken Forest Landscape Restoration: \$4,073.
6. Orchard Lane Homeowners Association: \$3,775.
7. Skyline Grange Trail & Hedgerow: \$3,950.
8. Sweet Haven Weed Control & Restoration: \$2,780.
9. Capitol Hill Elementary: \$8,757.
10. Dowsett Conservation Project: \$2,360.
11. Lightcap Manure Compost Demonstration: \$698.
12. Deer Creek Restoration Expansion: \$2,206.
13. Ma Olsen Garden Restoration: \$792.
14. Raleigh Ridge Estates/Fanno Creek: \$7,070.
15. Bridgeview Moorage Ivy Removal: \$3,360.
16. Graff Hedgerow: \$980.
17. Deer Creek Restoration Expansion/Linden Johnson: \$2,158.
18. Arnold Creek Restoration: \$3,025.



19. Pendleton Creek Trail & Habitat Enhancement: \$4,374.
20. Puhl Ivy/Holly Eradication: \$1,555.
21. Sauvie Island Grange/Charlton Road Ivy: \$5,188.
22. Tryon Creek Native Plant Propagation: \$2,529.

The District Fiscal Year 2010-2011 Financial Report is available at the WMSWCD office. Due to the schedule of the yearly audit, figures were not ready by press time. However, any questions can be answered by contacting District Manager, Dick Springer, at 503/238-4775, ext. 106 or [dick@wmswcd.org](mailto:dick@wmswcd.org).

## Invasive Weeds

WMSWCD has had great success this past year battling a number of noxious weeds that displace native/desirable plants and wildlife habitat and negatively affect timber and agriculture production.

**285 Garlic mustard acres surveyed/5.5 treated**

**95 Knotweed acres surveyed/5.5 treated**

**146 Spurge laurel acres surveyed/3.6 treated**

**60 English ivy/holly acres treated**

**2,400 Native plants installed**

**50 (140 hours) NARA Volunteers**

**40 Volunteers/500 educated at ivy pulls**

**10 Restored creek habitat acres**

### *Garlic Mustard (Alliaria petiolata)*

This is the first in three years that WMSWCD and its partners have seen a drastic decrease in the percentage of treated patches of garlic mustard from the Northwest Hills to the Riverview/Palatine watersheds in unincorporated Multnomah County.



### *Knotweeds (Fallopia/Polygonum spp.)*

This year WMSWCD successfully completed its third year of knotweed treatment in the McCarthy Creek Watershed, eradicating large patches along the main stem of the Creek. This year, WMSWCD achieved 70% landowner participation along the infested mainstem. The District also treated knotweed in Balch and Miller Creeks, completed demonstration projects and erected educational signs at Portland and Sauvie Island public areas.



### *Spurge Laurel (Daphne laureola)*

WMSWCD removed mostly isolated plants found in gardens and woodlands in our District with weed wrenches and shovels. Increased monitoring, outreach and follow-up treatment will be needed to prevent this aggressive toxic woodland invader from becoming established.



### *Strategic Partnerships*

The District is actively engaged in the 4-County Cooperative Weed Management Area, working on mapping, education and outreach as well as technical weed control. WMSWCD also is active and helps fund the West Willamette Restoration Partnership - a collaborative effort to control aggressive weeds in Portland's western forests.

### *Education and Outreach*

After two years of weed control the Native American Rehabilitation Association Northwest (NARA NW) demonstration project was finally planted! This project, part of the larger McCarthy Creek Weed Control Program, restored a highly degraded riparian zone, which is visible from HWY 30 and NW Cornelius Pass Road. It will be posted with educational signs created by NARA residents and WMSWCD.



### *Miller/Ennis Creeks*

Two years ago, large scale invasive species control and restoration projects were started in the Miller/Ennis Creek and Balch Creek Watersheds, a vital ecological area of upland forest, riparian zones and streams. The Multnomah Channel Habitat Connection project restores habitat to a variety of wildlife, including native runs of federally listed ESA salmon!

## **Balch Creek**

The Balch Creek Restoration Demonstration Project removed priority invasives; garlic mustard, English ivy and English holly, in upland and riparian zones and restored wildlife habitat with native plants in upper Balch Creek. This project enhances watershed health in an important urban waterway and serves as a model to others throughout the watershed.



## **Volunteer Activity**

The District sponsored weed pulls this year including Forest Park Conservancy Ivy Pulls in Linnton and Wapato Greenway Access State Park. District staff and partners educated residents about invasive weeds at local events and neighborhood meetings, including Multnomah Days, Skyline Ridge Neighbors Summer Gathering, Sauvie Island Community Association, Master Gardner Trainings, Portland Rose Society and the Yard Garden and Patio Show.

## **FISH Grants**

**Tualatin Mountain Wetland:** Creates a year-round still-water wetland in the West Hills to provide crucial wildlife habitat to native salamander, waterfowl and mammal species.

**Brady Blackberry Removal:** Wildlife habitat and forest health will be improved on 3 acres in the West Hills through invasive plant removal, native plantings and forest thinning.

**Forest Heights Stream Enhancement:** This educational restoration demonstration project by the Forest Heights Homeowners Association will remove invasive weeds and restore a small section of Cedar Mill Creek with native plants.

**Healy Weed Control and Afforestation:** This project will improve wildlife habitat and forest health on 4.8 acres in the West Hills through invasive weed removal, native plantings and forest thinning.

**Mucken Forest Landscape Restoration:** This 4 acre project will remove invasive plants, restore native plant/wildlife habitat, and install an experimental bat house on Sauvie Island.

**Orchard Lane Homeowners Association:** This 1.3 acre project will remove invasive weeds and restore native riparian habitat along 1.3 acres of Wood's Creek in the Ash Creek neighborhood.

**Skyline Grange Trail & Hedgerow:** This 3.45 acre project will restore health to the Skyline Grange forest land by installing a pollinator hedgerow and trail, which will then be used for native plant/pollinator education.

**Sweet Haven Weed Control & Restoration:** By removing invasive weeds, thinning forests and planting native species, this project will reduce erosion, improve wildlife habitat and forest health on 3.45 acres in the West Hills.

**Capitol Hill Elementary:** *Depave* will work with the school, community and PTA to remove asphalt and install a native plant garden and pervious paver story circle in the school yard.

**Dowsett Conservation Project:** A functional covered manure storage structure as well as gutter and downspout repairs will be installed on a horse owner's property to address mud, erosion, and water quality concerns from nutrient-rich runoff.

**Lightcap Manure Compost Demonstration:** This project will install a newly designed accessible, affordable and manageable manure compost structure suitable for small livestock operation.

**Deer Creek Restoration Expansion:** Phase 3 of this project will restore property along Deer Creek, a tributary to Tryon Creek, and is part of on-going private landowner restoration.

**Arnold Creek Restoration:** The project will restore 1.7 acres along the tributary to Tryon Creek, by removing invasive weeds and installing native plants in various habitats.

*(FISH Grants continued...)*

**Ma Olsen Garden Restoration:** The Linnton Community Association and Neighbors West Northwest will reclaim a community landmark from invasive weeds and restore a garden with native plants.

**Raleigh Ridge Estates/Fanno Creek:** Five landowners will remove invasive weeds and install erosion control blankets and native plants along a 1.4 acre segment of Fanno Creek.

**Bridgeview Moorage Ivy Removal:** Three acres of riparian zone, infested with invasive English ivy and holly, will be restored along the Multnomah Channel. Sixty residents from 29 moorages will clear weeds, plant 250 native shrubs and monitor success.

**Graff Hedgerow:** Private landowners in the west hills will install a native plant pollinator hedgerow around a small area planted with Oregon white oak; a declining habitat type in Oregon used by native bees.

**Deer Creek Restoration Expansion:** This project on 0.5 acres along this important tributary to Tryon Creek, will extend existing restoration efforts. Assisted by Tryon Creek Watershed Council, it will restore habitat, educate and encourage neighbors to continue restoration.

**Pendleton Creek Trail & Habitat Enhancement:** Volunteers will remove invasive weeds, install native plants and repair trails in Portland's Hayhurst Neighborhood along Pendleton Creek, a tributary to Fanno Creek.

**Puhl Ivy/Holly Eradication:** Private landowners, adjacent to Forest Park in the west hills, will remove highly invasive ivy and holly, restore native mixed stand forest habitat, improve wildlife habitat and remove an invasive seed source.

**Sauvie Island Grange Forest/Charlton Road Ivy:** The Grange, Sauvie Island Academy, WMSWCD and residents will remove invasive ivy and holly on a 4.5 acre site, establish native plants and erect an interpretive sign.

**Tryon Creek Native Plant Propagation:** The Tryon Creek Watershed Council will improve and expand its small native plant propagation program.

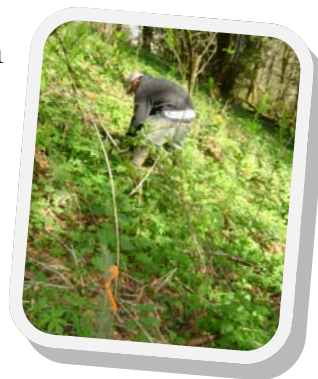
## Urban Programs

**7,000 Native plants installed**  
**240 Residents received technical information**  
**200 Backyard Habitat landowners certified**  
**50 Site visits completed**  
**20 Acres of urban habitat enhanced**  
**8 Conservation plans developed**

### Large-scale Streambank Restoration

#### Balch Creek

The Balch Creek Restoration Demonstration project restores upland forest and streambanks by removing some of the watershed's worst invasive weeds, planting native species, and using erosion control measures.



WMSWCD also formed the Balch Creek Partners (BCP), an interagency task force that coordinates conservation efforts in the watershed.

#### Tryon Creek

The Boone's Ferry Crossing Project restores upland and riparian natural areas on private and state property between Tryon Creek State Natural Area (TCSNA) and SW Boones Ferry Road.

## ***Fanno Creek Watershed***

This year WMSWCD worked with landowners and homeowner associations on Ivey and Bridlemile Creeks in a volunteer planting; Forest Heights Neighborhood Association volunteers planted native species and organized work parties to care for their natural areas. Another site treated for heavily infested weeds will be planted next year.



## ***Neighborhood Demonstration Projects***

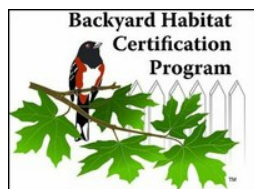
This year WMSWCD provided technical and financial support to the Bill Naito Corporation to remove invasive weeds at Montgomery Park and install a native pollinator garden in one area and install native trees and shrubs in another. The garden was showcased in a Pollinator Tour in June to 20 landowners who learned about native pollinators and how to install a pollinator hedge-row.



The Portland Urban Meadowscape Pilot project was launched this year with 20 participating landowners. The goal is to persuade urban landowners to convert conventional lawns to an array of native grasses, wildflowers and other forbs to benefit pollinators and other wildlife and to increase stormwater infiltration.

## ***Wildlife Linkages***

Habitat links for wildlife exist throughout Portland, but they need to be expanded and enhanced. WMSWCD provides technical and financial support to the Backyard Habitat Certification Program (BHCP) to provide access to advanced habitat restoration by removing aggressive weeds, naturoscaping, stormwater management and wildlife stewardship.



## ***Stormwater Enhancements***

WMSWCD partnered with Depave to help Capitol Hill Elementary “free their soil” this year (as in ripping up pavement!) allowing rainwater to soak into the ground and keep street pollutants away from rivers & streams.

## ***Strategic Partnerships***

WMSWCD forms strategic partnerships to maximize resources and avoid duplication. This year, partners included watershed councils, neighborhood associations, City of Portland Bureau of Environmental Services, Metro, West Willamette Restoration Partnership, 4-County Cooperative Weed Management Area, and NRCS.

## ***Farms & Livestock***

### ***Abbey Creek Stables***

WMSWCD helped Abbey Creek Stables with nearly \$25,000 of District and Natural Resource Conservation Service funding, technical assistance, and engineering design, to install a 1,700 cubic foot manure storage shed. The covered structure is part of a farm conservation plan and prevents leaching of contaminants into Abbey Creek from a large unprotected manure pile.



Underground outlets will route water away from contaminants and swales will filter runoff.



Himalayan blackberry was controlled and 2,500 wetland, hedgerow, and pollinator/wildlife plants will be installed and native trees and grasses will provide wind and noise barriers and improve habitat.

## Farms & Livestock continued...

### Malinowski Farm

Cattle on Malinowski's organic farm used two "sacrifice" areas that became muddy quagmires during the wet season, posing water quality and livestock health concerns. The District helped install two concrete "heavy use" areas and manage two pond riparian plantings and two native plant hedgerows, planted in early 2011 to help pollinate nearby farm produce. The \$40,000 project was funded through WMSWCD, OWEB and NRCS grants.



Staff monitored plant survival and helped maintain the habitat areas, including control of invasive nutria and bullfrogs, which prey on native species. WMSWCD re-planted 1,500 plants and added extra organic weed control measures.



WMSWCD enhanced oak habitat on the property removing competing Douglas fir trees and managing historic wet meadow. The stand houses native camas and fawn lilies.

*"Without a doubt, Kammy made all the difference in the success of our project. As we ran into road blocks, she helped us find away around them in each case. It is fair to say that without her support we would have been unable to complete our project."*

- Greg Malinowski, Malinowski Farm

## Forestry

**9 Complete/in progress Stewardship plans**  
**229 Complete/in progress Stewardship acres**  
**3 Pollinator projects 400 feet of property**  
**65 Invasive species acreage removed**  
**1,700 Native plants installed**  
**30 Acres improved by Farm Bill programs**  
**100 Landowners educated**

### Assisting Woodland Owners

WMSWCD staff focused on assisting rural woodland owners with invasive weed control, installing native pollinator & wildlife habitat, and stewardship planning. Forest Stewardship Plans can help landowners to make informed decisions about forest conservation and management. Two Forest Stewardship Plans are complete and 7 more plans are in the works.



Three woodland owners have worked with the District to design pollinator plantings to enhance wildlife habitat with 1 planted this year to create approximately 400 linear feet of habitat.

Invasive species such as English ivy, English holly, Armenian blackberry, Herb Robert, and many others were removed from rural forest properties. Native plants were installed in areas previously covered by non-native species. Despite the freezing temperatures last



winter, we had success by storing the seedlings in cool garages keeping the roots moist.

WMSWCD helped landowners secure thousands of dollars through federal Farm Bill Programs to remove invasive weeds and improve timber stands. The District provided education to landowners at a woodland information night, Ties to the Land Succession Planning Workshop, and at OSU Extension's Tree School event.

*"The FISH grant that WMSWCD provided has allowed me to continue to develop sustainable, family (4th generation) forest land. Michael and the staff of WMSWCD serve as valuable support and knowledgeable advisors to me as I remain on the land. THANK YOU WMSWCD!"*

- Pat Brady, Woodland Owner

## Rural Programs

**16,200 Native plants installed**

**0.75 Miles of stream planted**

**3 New stream projects**

**4 New landowner projects planned**

### Healthy Streams Program

WMSWCD's Healthy Streams program now encompasses streams on Sauvie Island and McCarthy, Rock and Abbey Creeks in the Tualatin Mountains.

Details of the three new projects, planted in February 2011, are:

- One acre along 1,800 linear feet of the Gilbert River at Sauvie Island Stables received 2,700 native trees and shrubs, including Oregon white oak, native to Sauvie Island.
- Demonstration project on 0.25 acre was planted with 330 native trees and shrubs along 125 linear feet of the Gilbert River at the Hartline property on Sauvie Island. A non-native cherry tree was removed and invasive blackberry and reed canary grass were controlled.
- 1.5 acres of riparian area along 1,735 linear

feet of McCarthy Creek were planted with 4,000 native trees and shrubs, including black cottonwood, Western Hemlock and many others. A stand of invasive bamboo and a large English holly were removed, other invasive plants were treated, and plant protection caging was installed to protect plants from beaver.

### Non-stream Plantings



Serviceberry

Last March over 200 native plants were installed as part of a pollinator hedgerow at the Sauvie Island Grange. Ten different species will provide food for bees and other pollinators throughout the growing season.

At the McMahon Family Property, on Sauvie Island, over 8,000 native plants (27 species) were planted, creating wildlife habitat with an emphasis on flowering plants. Black hawthorns were arranged around the outside of the field to provide a "living fence" while several different "islands" of plants within the field will allow the landowner to ride horses around them.

## Outreach & Communications

**16,000+ Residents reached**

**19,000 Web page hits to date**

**WMSWCD Facebook page launched**

**WMSWCD Adopts Sauvie Island Road**

WMSWCD reached a larger number of district residents this year through workshops, speaking engagements, information tables at local events and distribution of a wide variety of brochures and educational materials.

We spent time together cleaning up a part of Sauvie Island Road under the County's Adopt-a-Road program. Check out our new Facebook page and our website for tips on caring for your land and woods.



## Sauvie Island

**40 Acres of ivy removed from oak/Gilbert R.**

**30 Ivy infestation sites mapped**

**20 Volunteers at Wapato weed pulls**

**4 Interpretive signs at Wapato**

### Wapato Access Area Greenway

WMSWCD helps Oregon State Parks plan and care for the 180 acre Wapato Access Area "Greenway," or natural area, on Sauvie Island.

The District organized a volunteer weed pull, as part of SOLV's "Down by the Riverside" day September, 2011 to remove early invader weeds like garlic mustard and weedy geraniums, plus encroaching Himalayan (recently renamed "Armenian") blackberry in areas of young Oregon white oaks, English ivy and holly, and Scot's broom. Volunteers

from the community, WMSWCD and Portland Audubon Society helped out.



New, large interpretive signs, highlighting Wapato habitat, were created this year. The first was posted at the entrance to the natural area and three additional signs will be posted in the Oregon white oak savanna at Virginia Lakes, and in the riparian forest of Oregon ash and Black cottonwood along the Multnomah Channel. Staff researched and prepared technical content for the signs and stock an information kiosk with invasive weed brochures.



The District conducted site visits and partnered with Oregon State Parks, ODFW, NOAA Fisheries, and the Lower Columbia River Estuary Partnership to coordinate efforts and to reach out to neighbors about restoration plans for Virginia Lakes. Design work, funded by the Bonneville Power Administration, calls for a

water channel so that more water can reach the lake during high river flows to benefit salmon and other wildlife.

### Sauvie Island English Ivy Control

WMSWCD has started mapping all known English ivy infestations on Sauvie Island, so it can help with removal in conjunction with Island resident and board member Jane Hartline. After 30 sites were identified, Chairwoman Hartline donated numerous hours and rounded up other volunteers to tackle tree ivy. The District identified two priority areas on private land and paid crews to remove ivy around 40 acres of oak and along the Gilbert River.



### Oregon White Oaks

WMSWCD assists landowners to identify, plant and protect Oregon white oaks and habitat in our area. The District is mapping white oak stands, particularly historic oak habitat, to find out where they are and how best to focus our support in partnership with other interested parties. WMSWCD promotes understory with native flower



**District Manager Dick Springer talks with landowners about ivy control around white oaks.**

and grass seeds that are part of the Oregon white oak woodland or savanna plant community.

### Sturgeon Lake

This year was one of new momentum in the Sturgeon Lake Project. The US Army Corps of Engineers approved funds (now totaling \$600,000+) to complete a feasibility study. District staff installed automated probes that track the changes in water levels in the Lake, along the Columbia and in Multnomah Channel. This data will allow the Corps and their private contractor to model the effects of any proposed restoration projects as well as track actual changes in the lake into the future.



## Education

- 236 Field Trip participants to Sauvie Island to learn about edible gardens/pollinators**
- 335 lbs. of food harvested for food banks**
- 109 Educational hours in garden**
- 15 Pounds of food harvested**
- 4 Schools participating:** Chapman Elementary, Capitol Hill School, Sauvie Island Academy and West Hills Montessori School
- 2 Native/pollinator gardens planted**
- 2 Edible school gardens planted**

### Water Quality Sampling

Last winter the District completed an analysis of macroinvertebrate sampling for water quality. We sampled at 7 different locations on 5 creeks from 2009 to 2010. While all the creeks sampled were rated as having some amount of impairment, the reason for and overall impact of the disturbance was quite varied. The results will guide how we approach restoration in three areas.



*Cultivate Portland students build garden boxes for Sauvie Island Academy*

*Girl Scout Troop 40313 installs edible garden at Capitol Hill School*



*Capitol Hill School students harvest lunch at Sauvie Island Center*



Site Name	Ave B-IBI* Score	Impairment Rating	Major contributing factor to degraded water quality	Other factors
Abbey Creek	22	moderately	Sediment, nutrients	Temperature**
Upper Abbey Creek	38	slightly	Sediment**	
Lower Balch Creek	28	moderately	Sediment	Temperature**
Upper Balch Creek	30	slightly	Sediment	Nutrients
Crabapple Creek	28	moderately	Sediment, Nutrients	Temperature
McCarthy Creek	29	moderately	Sediment	Temperature
Miller Creek	42	unimpaired	Sediment**	

\* Benthic (stream bottom) Index of Biotic Integrity<sup>11</sup>

\*\* not statistically significant

## Community Gardens

WMSWCD provided financial and technical resources to Northwest Portland Ministries to install an organic community garden, serving the neighborhood as well as NWPM clients, particularly those who access their food banks. The garden is also a demonstration of sustainable soil, water, and small scale agricultural conservation practices. Creating the garden beds, planting them, and harvesting them has been a community endeavor with volunteers from De La Salle

North Catholic High School, Rose Haven, and Metropolitan Learning Center among others.

The produce harvested and distributed through the food pantry went to food boxes and Loaves and Fishes centers to help feed needy Oregonians.



### District Staff

Dick Springer	District Manager
Carolyn Lindberg	Communications Coordinator
Erica Stokes	Executive Assistant
Kammy Kern-Korot	Senior Conservationist
Scott Gall	Rural Conservationist
Mary Logalbo	Urban Conservationist
Michael Ahr	Forest Conservationist
Michelle Delepine	Conservation Technician
Steve Fedje	NRCS District Conservationist

### District Directors

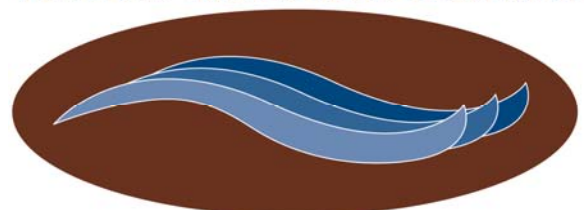
Jane Hartline	Chair, Director, Zone 2
Terri Preeg-Riggsby	Vice-Chair, Director, Zone 5
David Patte	Secretary, At-Large Director
Marshall Miller	Treasurer, At-Large Director
Brian Lightcap	Director Emeritus, Zone 4
Kim Peterson	Director, Zone 1
George Sowder	Director, Zone 3
Weston Miller	Associate Director
Bob Wiley, Sr.	Associate Director

**Our Mission:** To conserve and protect soil and water resources for people, wildlife and the environment.

**Our Boundaries:** Our District encompasses Multnomah County, west of the Willamette River, including all of Sauvie Island.

The U.S. Department of Agriculture (USDA) and the West Multnomah Soil & Water Conservation District (WMSWCD) prohibit discrimination in all their programs and activities on the basis of race, color, national origin, sex, religion, age, disability, political beliefs, sexual orientation, and marital or family status. (Not all prohibited bases apply to all programs.) Persons with disabilities who require alternative means for communication of program information (Braille, large print, audiotape, etc.) should contact USDA's TARGET Center at (202) 720-2600 (voice and TDD).

## WEST MULTNOMAH



SOIL & WATER CONSERVATION DISTRICT

\* Printed on recycled paper

